

Chetwynd Road Primary School
 Chetwynd Road
 Toton
 Beeston
 Nottingham NG9 6FW
 Headteacher: Mr Graeme Robins
 ☎ 0115 9177 353
 Fax 0115 9177 352
 e-mail: office@chetwyndroad.notts.sch.uk

Dear Parents

27th January 2011

Open Morning

Thank you to all those parents who were able to attend our Literacy Open Morning on 26th. It was lovely to see you all in school and equally as nice to receive such positive feedback from parents about the morning and the activities in the classrooms. The children are always very excited to share their school experience with parents and grandparents and these sessions are very valuable in promoting the home-school relationship.

We hope to have another Open Morning in June – this time with a Science focus. Confirmation of the date and further details will be sent nearer the time. Thank you.

Residential Trip Autumn Term 2011

We have a few places left for any **current Year 4 or 5 pupils** who wish to attend next academic year's Yr5/6 residential trip in November 2011. The closing date for reserving places and paying your deposit is 4th February 2011. After this date the places will be booked with the centre and any new requests will be placed on a waiting list. Thank you.

Parking on Chetwynd Road

PC Dave Ward, our local Beat Manager has confirmed that the Highway Code states that you shouldn't park opposite or within **10 metres (32 feet)** of a junction except in an authorised parking space. Please bear this in mind if you need to park on Chetwynd Road and avoid the junctions of the 4 cul-de-sacs, especially The Crescent. You should also not double park, or park on the pavement. Thank you very much.

Ragtex Clothing Recycling Scheme

Our collection is on **Wednesday 9th February**. Please put the enclosed sticker on your bag and send it into school **on the morning of 9th February**. Thank you.

Bugs and Germs!

Please find attached NHS information to help prevent the spread of germs. We will be talking about this in school and would be grateful if you could support these measures at home. Thank you.

Diary Dates – Spring Term 2011

Friday 28 th January	<i>Cake Friday - Cakes to be provided by families in F2 and KS1 please. Thank you.</i>
Thursday 3 rd February	3.30pm Parent / School Nurse drop In Session
Wednesday 9 th February	RAGTEX Clothing Recycling Collection - am
Wednesday 9 th February	Yr 6 Parents - SATs presentation evening
21st to 25th February	Half Term
Monday 28 th February	INSET DAY – School closed to children
Monday 7 th and Tuesday 8 th March	Parents' Evenings
Wednesday 16 th March	Parents' Forum
Friday 25 th March	Dress Up Day – more info to follow
Wednesday 13 th April	6.30pm – Friends AGM
18 th to 29 th April	Easter Break
Monday 2 nd May	Bank Holiday
Tuesday 3rd May	School closed in lieu of Royal Wedding Day.
Wednesday 4th May	Children return to school after the Easter Break.
(Mon 9th to Fri 13th May	Year 6 SATs week. Whole school assessment week).

Please remember that many of our letters are placed on our website www.chetwyndroad.co.uk.

Take a look to keep you up-to-date.

CATCH IT

Germs spread easily. Always carry tissues and use them to catch your cough or sneeze.



BIN IT

Germs can live for several hours on tissues. Dispose of your tissue as soon as possible.



KILL IT

Hands can transfer germs to every surface you touch. Clean your hands as soon as you can.



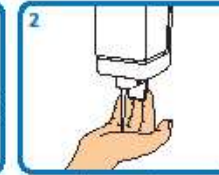
© Crown copyright 2007 28628/04 1p 8/8 Nov07 (2/1)



Hand-washing technique with soap and water



Wet hands with water



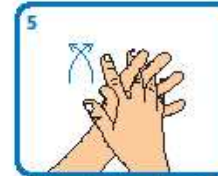
Apply enough soap to cover all hand surfaces



Rub hands palm to palm



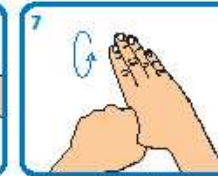
Rub back of each hand with palm of other hand with fingers interlaced



Rub palm to palm with fingers interlaced



Rub with back of fingers to opposing palms with fingers interlocked



Rub each thumb clasped in opposite hand using a rotational movement



Rub tips of fingers in opposite palm in a circular motion



Rub each wrist with opposite hand



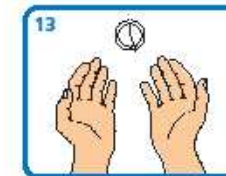
Rinse hands with water



Use elbow to turn off tap



Dry thoroughly with a single-use towel



Hand washing should take 15-30 seconds



© Crown copyright 2007 283373 1p 1k Sep07

Adapted from World Health Organization *Guidelines on Hand Hygiene in Health Care*

